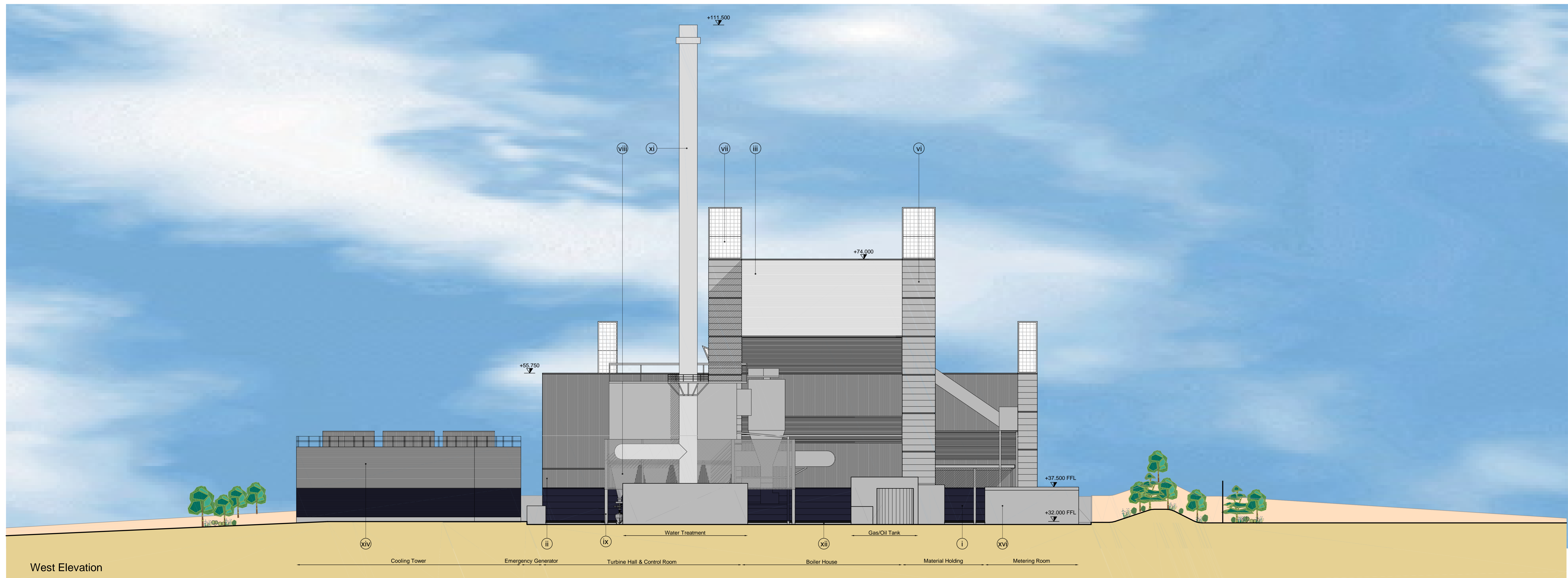
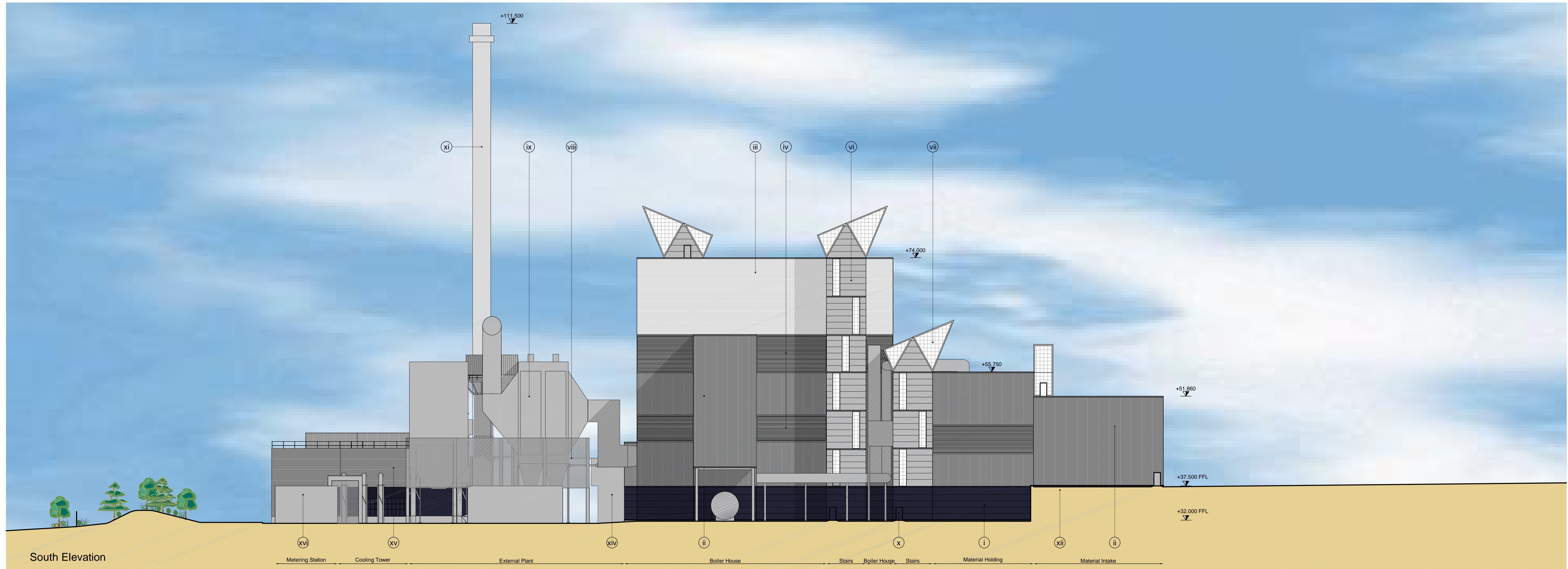


NOTES :

1. If this drawing has been received electronically it is the recipient's responsibility to print the document to the correct scale.
2. All dimensions are in millimetres unless stated otherwise. It is recommended that information is not scaled off this drawing.
3. This drawing should be read in conjunction with all other relevant drawings and specifications.

Key

- i Horizontally laid metal composite cladding panel, microrib profile, Corus Colourcoat HPS 200 Ultra Finish, Colour: Anthracite
- ii Vertically laid metal built up cladding system, trapezoidal profile, Corus Colourcoat HPS 200 Ultra Finish, Colour: Pure Grey
- iii Horizontally laid metal built up cladding system, trapezoidal profile, Corus Colourcoat HPS 200 Ultra Finish, Colour: Hamlet
- iv Extruded aluminium architectural louvre system, polyester powder coated, Colour: Pure Grey
- v Pressed metal framing Corus Colourcoat HPS 200 Ultra Finish, Colour: Orion
- vi Horizontally laid metal composite cladding panel, microrib profile, Corus Colourcoat HPS 200 Ultra Finish, Colour: Orion
- vii Kalwall transparent composite panel
- viii Perforated mesh metal screening with polyester powder coated finish, Colour: Metallic Grey
- ix All exposed external steel to be galvanised
- x Pedestrian doors to be Hormann Sentinel Door MZ-1 - or similar  
Colour to match surrounding cladding
- xi Flue/stack to be painted light grey
- xii Precast Concrete Wall
- xiii Powder coated aluminium framed double glazing window, Kawneer AA 500 series - or similar  
Frame colour: RAL 7016
- xiv Sprinkler Tanks & Pump House
- xv Cooling Tower
- xvi Metering Station



For Planning Purposes

Sherwood House Sherwood Avenue Newark, Nottinghamshire NG24 1QB		
T +44 (0) 1636 605 700 F +44 (0) 1636 605 699 www.rpsgroup.com e rpsenquiries@rpsgroup.com		
Client 		
Project Rose Energy Facility Glenavy		
Title Proposed Cladding Elevations South & West Elevations		
Drawing Status Preliminary	Date Created March 2008	Drawing Scale 1:250
Project Leader AWY	Drawn By IRD	Initial Review RS
Drawing Number 15562 / A0 / 111		Rev D